

GAS METERS WITH INTEGRATED MECHANICAL DEVICE FOR GAS TEMPERATURE CONVERSION G2.5CT; G4CT

- Manufactured in compliance with the OIML and EN 1359 recommendations;
- Diaphragms with synthetic cloth;
- Electrostatic spray paint with epoxy-polyester powder;
- Pulse transmitter/reed (optional);
- Magnetic coupling.



TECHNICAL CHARACTERISTICS

Type GN
(magnetic coupling)

- Accuracy class:
- Qmin [dm³/h]:
- Q [m³/h]:
- Qmax [m³/h]:
- Cyclic volume [dm³]:
- Maximum pressure [bar]:
- Ap max [mbar]:
- Counter type:
- Maximum reading [m³]:
- Minimum reading [dm³]:
- Temperature range [°C]:

GN G2.5CT
(with integrated mechanical device for gas temperature conversion)

- 1,5
- 25
- 0.40
- 4
- 4.8
- 1.2
- 0.5
- 2
- mecanic 8 role cifrate
- 99999, 999
- 0,2 tm= (-25...+40), pentu GN G2.5CT, GN G4CT

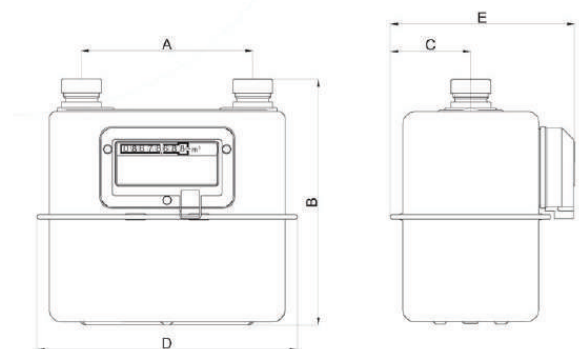
GN G4CT
(with integrated mechanical device for gas temperature conversion)

- 1,5
- 40
- 0.60
- 6
- 7.2
- 1.2
- 0.5
- 2

- Reference temperature for volume conversion: tb=15 C
- Calibration temperature: tsp=15 C
- Auxiliary equipments: 0,002 m³/ imp sau 0,01 m³/ imp
- Mechanical environmental class: M2
- Electromagnetic environment class: E1

OVERALL DIMENSIONS AND ASSEMBLY SPECIFICATIONS

A	B	C	D	E	DN
110	223	75	217	172	G1 1/4" (ISO 228)
160	228	75	243	172	G1 " (ISO 228)



OTHER CHARACTERISTICS, ON DEMAND

Width between centres [A]: 152,4
Pipe union threads [DN]: pipe thread 1" or 1/4"
(BS 746) and 3/4" NPT

