

GAS METERS WITH DIAPHRAGMS TYPE GN G4T/ G4TC SP SINGLE PIPE METER

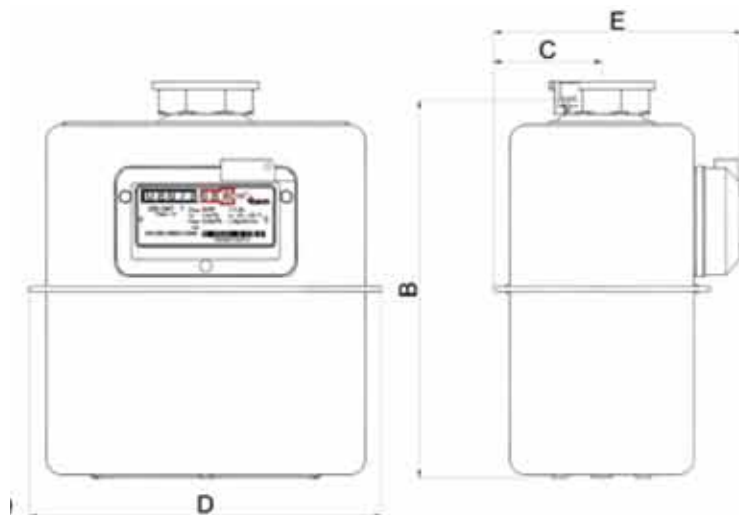
MAIN CHARACTERISTICS

- Manufactured in accordance with the provisions of OIML and EN 1359 ;
- Cyclic volume 2 dm³;
- For metering domestic natural gas
- Diaphragms with high quality synthetic cloth
- Magnetic coupling



CONSTRUCTION

- Compact size, steel cases 1 mm
- Device to prevent the registration of reverse flow
- Mechanical roller counter
- Version ready for remote reading, can be equipped with pulse generator
- Electrostatic spray paint with epoxipolyesteric powder
- Resistance to constituents of the gas
- Fire resistant construction
- Resistance to external corrosion
- Customized bar code
- Optionally (G4TC) with mechanical temperature conversion



TECHNICAL CHARACTERISTICS

- | | |
|--|-----------|
| • Minimum flow, Q_{min} [dm ³ /h]: | 0.040 |
| • Maximum flow, Q_{max} [m ³ /h]: | 6 |
| • Transitional flow, Q_t [m ³ /h]: | 0.60 |
| • Overload flow, Q_r [dm ³]: | 7.2 |
| • Maximum operating pressure, P_{max} [bar]: | 0.5 |
| • Cyclic volume [dm ³]: | 2 |
| • Maximum reading [m ³]: | 99999.999 |
| • Minimum reading [dm ³]: | 0.2 |
| • Storage temperature [°C]: | -25...+60 |
| • Temperature range (G4T) [°C]: | -25...+55 |
| • Temperature range (G4TC) [°C]: | -25...+40 |
| • Reference temperature for volume conversion (G4TC) [°C]: | 15 |
| • Calibration temperature (G4TC) [°C]: | 15 |
| • Optional pulse generator/reed, [m ³ /imp]: | 0.01 |
| • Accuracy class: | 1.5 |
| • Mechanical environments: | M2 |
| • Electromagnetic environment: | E1 |

OVERALL DIMENSIONS

Dimensiuni generale	Unite	Valuare
B	mm	262
C	mm	75
D	mm	243
E	mm	172
Greutate	kg	3
	DN	25

CONNECTIONS

According to ISO 228-1:G2"

